

How to Install

Atlanta Locator

(Amateur radio logging program for DOS)

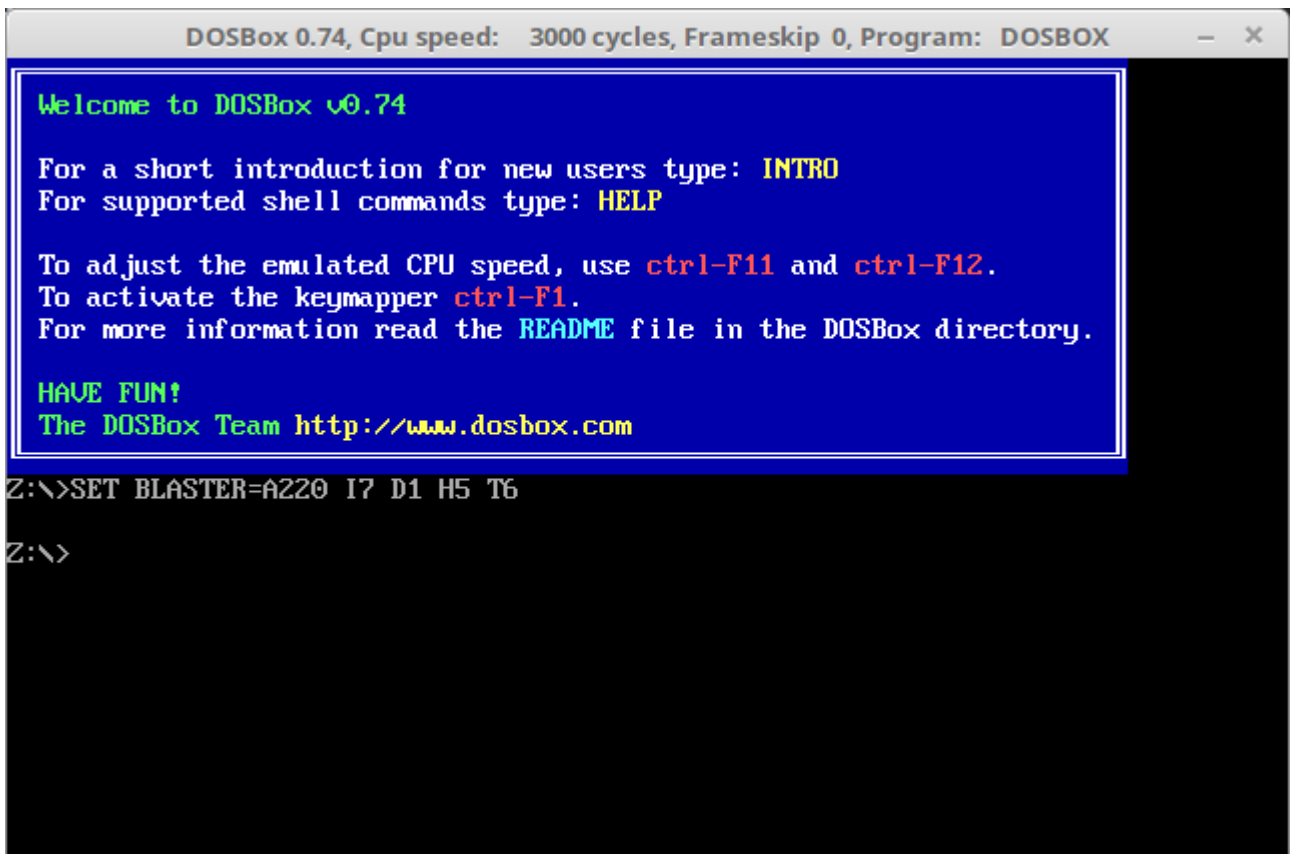
with

DosBox

in

Linux Mint

Install the DOSBox on your device, Open DOSBox



```
DOSBox 0.74, Cpu speed: 3000 cycles, Frameskip 0, Program: DOSBOX

Welcome to DOSBox v0.74

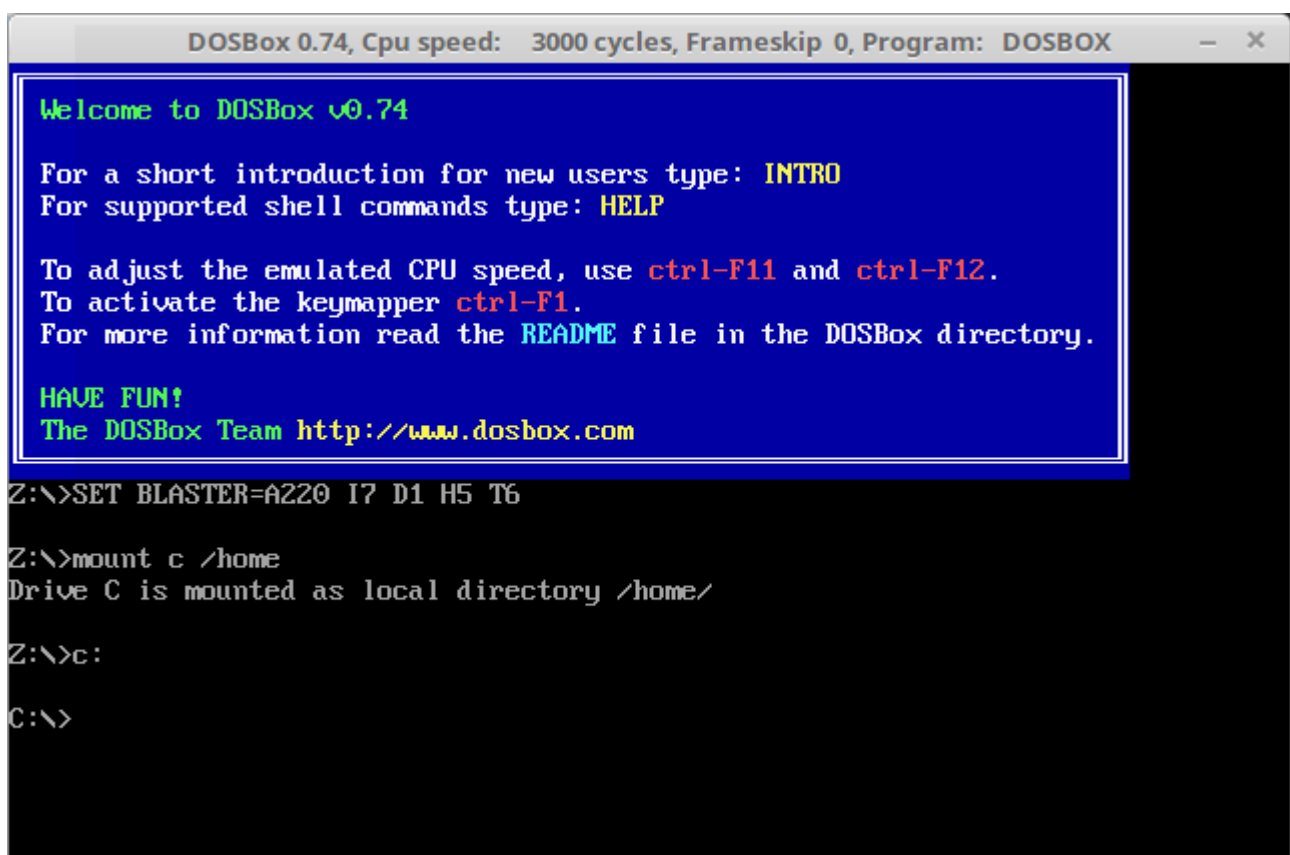
For a short introduction for new users type: INTRO
For supported shell commands type: HELP

To adjust the emulated CPU speed, use ctrl-F11 and ctrl-F12.
To activate the keymapper ctrl-F1.
For more information read the README file in the DOSBox directory.

HAVE FUN!
The DOSBox Team http://www.dosbox.com

Z:\>SET BLASTER=A220 I7 D1 H5 T6

Z:\>
```



```
DOSBox 0.74, Cpu speed: 3000 cycles, Frameskip 0, Program: DOSBOX

Welcome to DOSBox v0.74

For a short introduction for new users type: INTRO
For supported shell commands type: HELP

To adjust the emulated CPU speed, use ctrl-F11 and ctrl-F12.
To activate the keymapper ctrl-F1.
For more information read the README file in the DOSBox directory.

HAVE FUN!
The DOSBox Team http://www.dosbox.com

Z:\>SET BLASTER=A220 I7 D1 H5 T6

Z:\>mount c /home
Drive C is mounted as local directory /home/

Z:\>c:

C:\>
```

*Windows: `mount c c:\folder`

Basic DOS commands:

`cd SW` change directory (in my case from `C:\MICHAL\MICHAL` to `C:\MICHAL\MICHAL\SW`)

`cd..` Goes back one directory (in my case from `C:\MICHAL\MICHAL\SW` to `C:\MICHAL\MICHAL`)

`dir` The dir command allows you to see the available files and directories in the current directory.

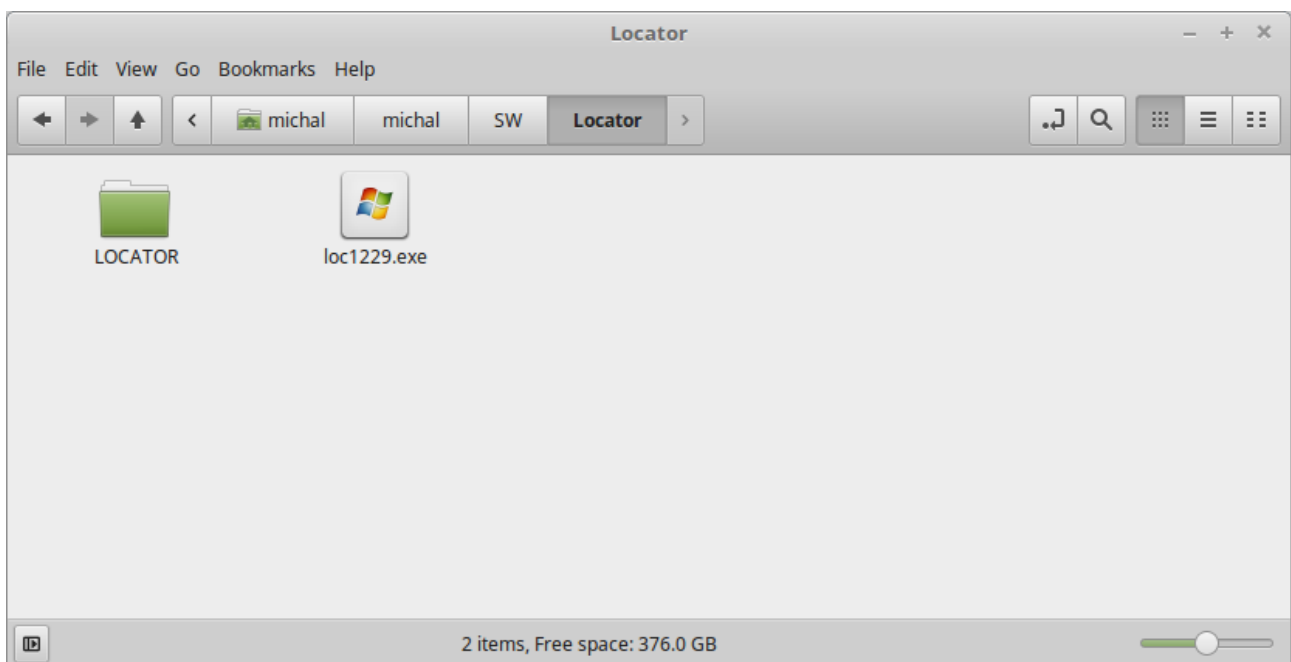
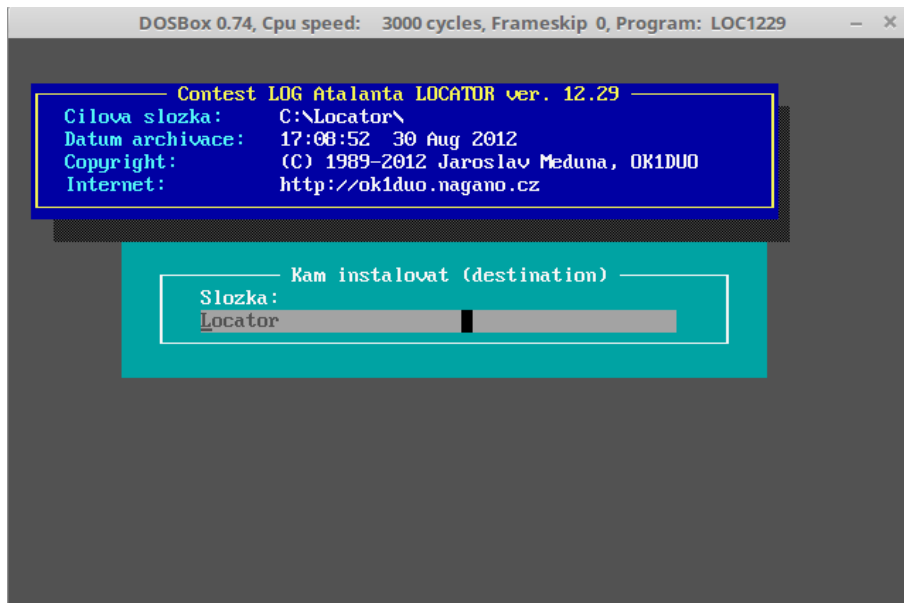
```
DOSBox 0.74, Cpu speed: 3000 cycles, Frameskip 0, Program: DOSBOX
0 File(s)          0 Bytes.
6 Dir(s)           262,111,744 Bytes free.

C:\MICHAL\MICHAL\SW>dir
Directory of C:\MICHAL\MICHAL\SW.
.                <DIR>           03-09-2016 16:24
..               <DIR>           25-08-2016 10:00
LOCATOR         <DIR>           03-09-2016 16:23
MATLAB          <DIR>           21-07-2016 17:45
MATLAB~1        <DIR>           22-07-2016  1:05
TISKAR~1        <DIR>           20-07-2016 12:26
0 File(s)          0 Bytes.
6 Dir(s)           262,111,744 Bytes free.

C:\MICHAL\MICHAL\SW>cd locator

C:\MICHAL\MICHAL\SW\LOCATOR>dir
Directory of C:\MICHAL\MICHAL\SW\LOCATOR.
.                <DIR>           03-09-2016 16:23
..               <DIR>           03-09-2016 16:24
LOC1229  EXE          392,883 03-09-2016 16:18
1 File(s)         392,883 Bytes.
2 Dir(s)           262,111,744 Bytes free.

C:\MICHAL\MICHAL\SW\LOCATOR>loc1229.exe
```



73! Michal OK1GHZ